

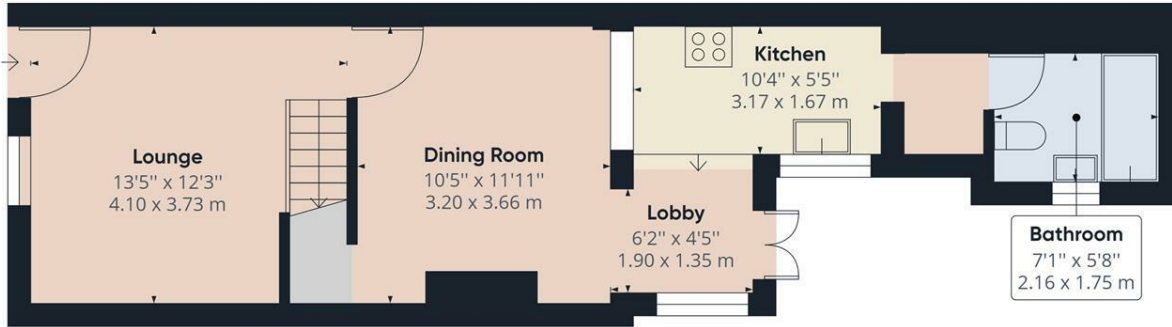


27 Smith Street, Strood, Kent, ME2 2BQ

ALL VIEWING SLOTS FOR THE 19/3 HAVE BEEN TAKEN. When entering this two bedroom mid terrace property you will be in pure amazement of the size it has to offer and its move in ready condition. A newly fitted modern kitchen with ample natural light will give you the real feel good factor when cooking and entertaining. Fantastically positioned for all you commuters out there as the train station is only a 10 minute walk and it is only a 5 minute walk to the town. StRood has plenty of high street shops, restaurants, bars and supermarkets. Accommodation comprises of lounge, dining room, kitchen and bathroom. To the first floor there are two double bedrooms. Benefits include gas central heating, double glazed windows and a rear garden. The loft is part boarded with fitted loft ladder. We all know the current market is super busy so do not delay pick up the phone and call the office to secure your viewing slot.

- TWO DOUBLE BEDROOMS
- NEWLY FITTED KITCHEN
- LARGE REAR GARDEN
- TWO RECEPTION ROOMS
- TOWN CENTRE LOCATION
- WALKING DISTANCE TO STATION
- GAS CENTRAL HEATING
- DOUBLE GLAZED WINDOWS
- CLOSE TO AMENITIES

£240,000



Ground Floor Building 1

Approximate total area⁽¹⁾
694.16 ft²
64.49 m²



Floor 1 Building 1

(1) Excluding balconies and terraces

While every attempt has been made to ensure accuracy, all measurements are approximate, not to scale. This floor plan is for illustrative purposes only.

GIRAFFE360

